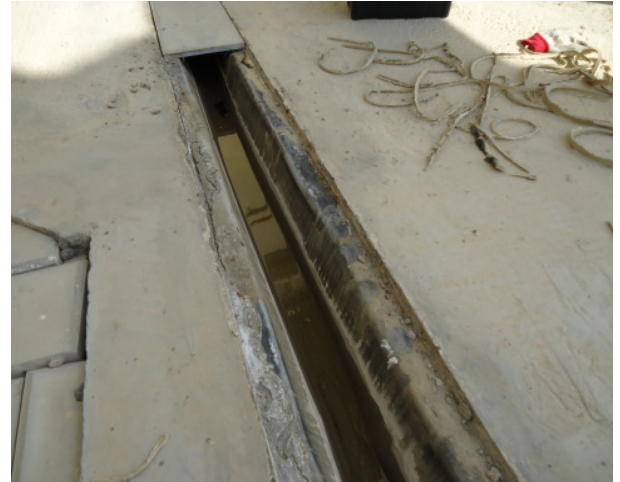


## Palm Jumeirah, UAE

POLYUREA

<b>Client</b>	Nakheel
<b>Construction Contractor</b>	Anticor LLC, Dubai
<b>Coating Contractor</b>	Anticor LLC, Dubai
<b>Project</b>	Roof Expansion Joints Palm Jumeirah, Dubai
<b>Area</b>	400 linear meters at 1.5m width
<b>Construction</b>	February 2011
<b>VIP System</b>	QuickSpray Eco



### Project Description

Shoreline Apartments Palm Island have had leaks through the expansion joints on roofs for a number of years. Many alternative repair systems have been tested without any success. VIP Polyurea was tested and successfully approved.

Processing took place in the following steps:

1. The existing waterproofing system (steel plates/ waterproof bituminous membrane) was removed.
2. Styrofoam inserts were placed in between the expansion joints as a bridging material.
3. GeoTextile was layed across the expansion joints.
4. The aromatic Polyurea QuickSpray sprayed @ 2mm thickness.

The complete process was successfully completed in 30 days.

